

FIGURES AND CAPTION OF THE FIGURES

JETS IN THE INNER COMA OF COMET 31/ATLAS

*Federico Manzini (Stazione Astronomica di Sozzago),
Virginio Oldani (Stazione Astronomica di Sozzago),
Paolo Ochner (INAF-UniPd),
Luigi R. Bedin (INAF-OAPd),
Andrea Reguitti (INAF-OAPd),
Alessandra Mura (INAF-UniPd),
Andrea Farina (INAF-UniPd)*

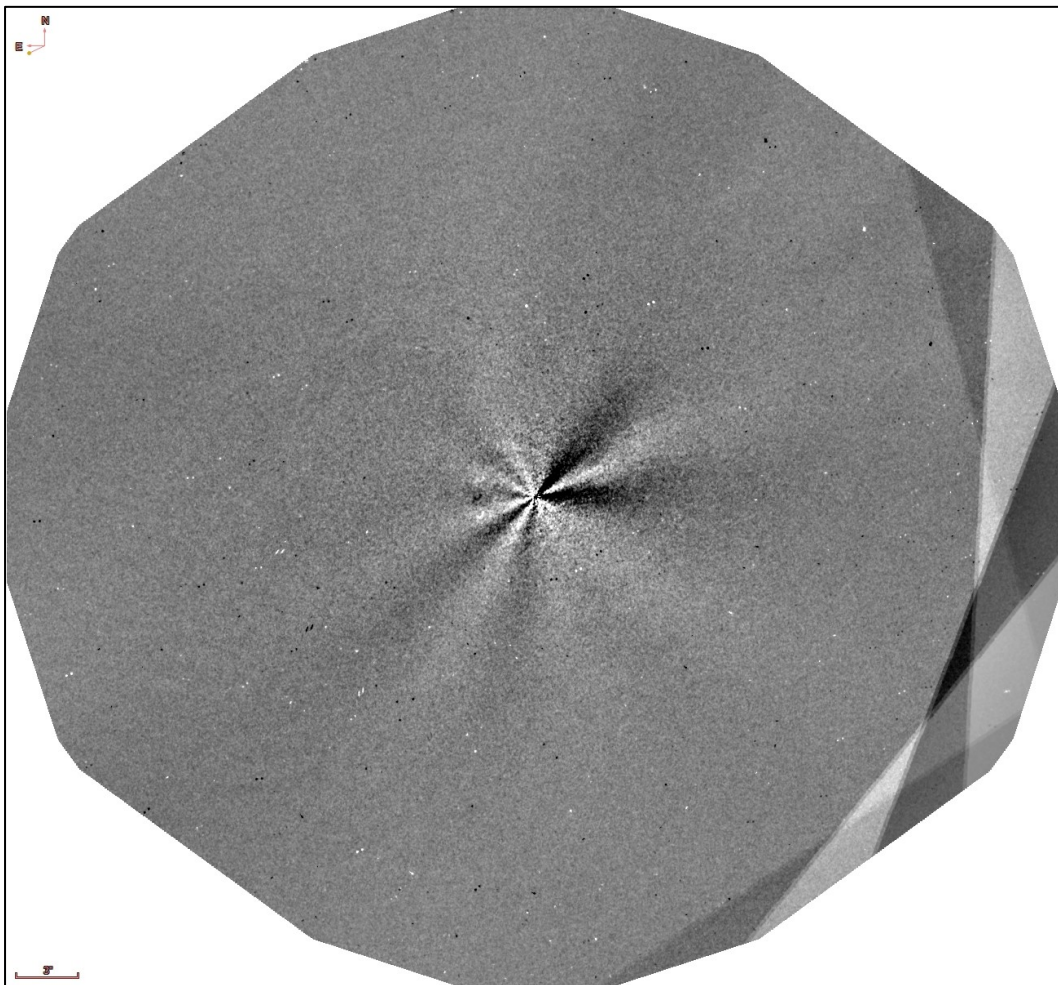


FIGURE 1

31 (ATLAS). HST image of November 30, with a resolution of 56 km/pixel. The original stacked image was treated with a LS filter ($\alpha=15^\circ$).

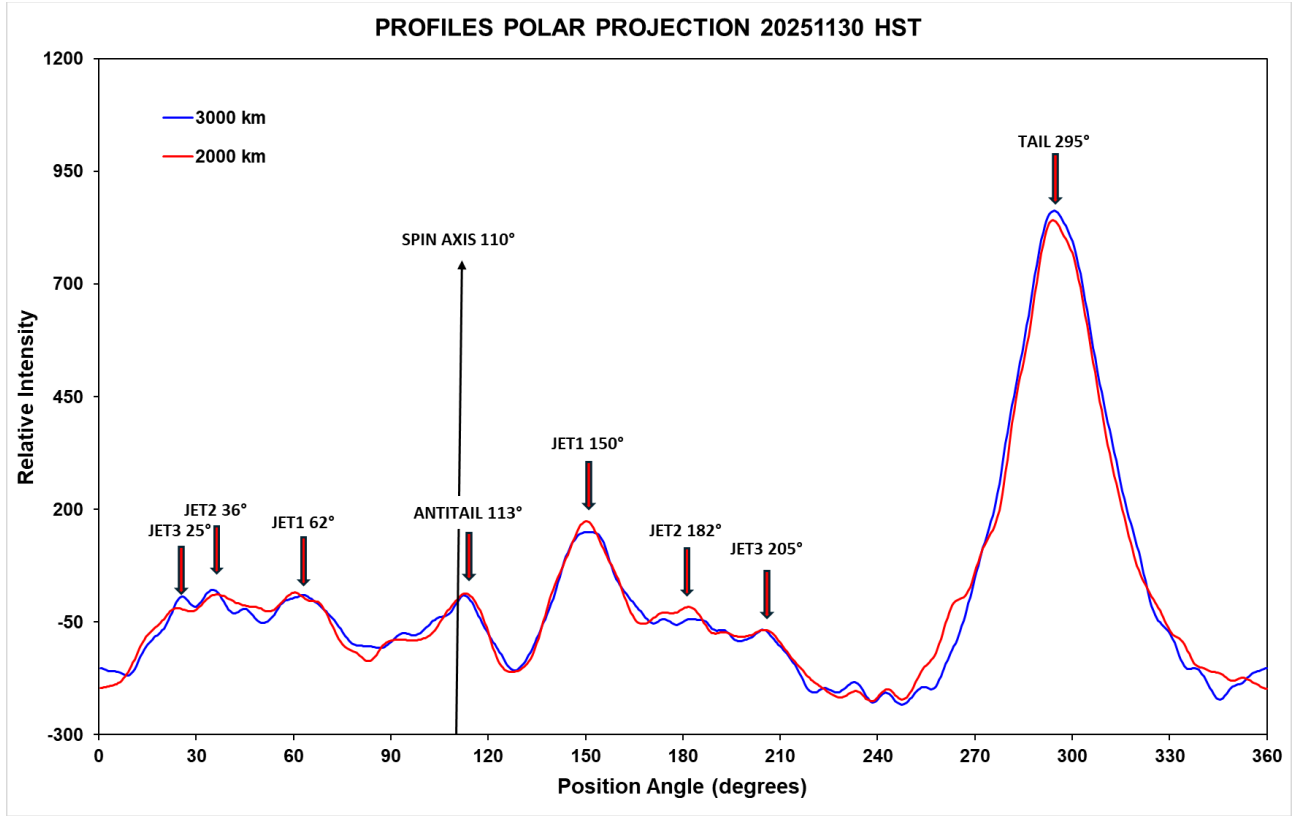


FIGURE 2

3I (ATLAS). Photometric cuts at 2000 km and 3000 km on the HST image of November 30, enhanced with a $1/r$ and a L-S filter ($\alpha=15^\circ$). The arrows indicate the luminosity peaks corresponding to the jets.

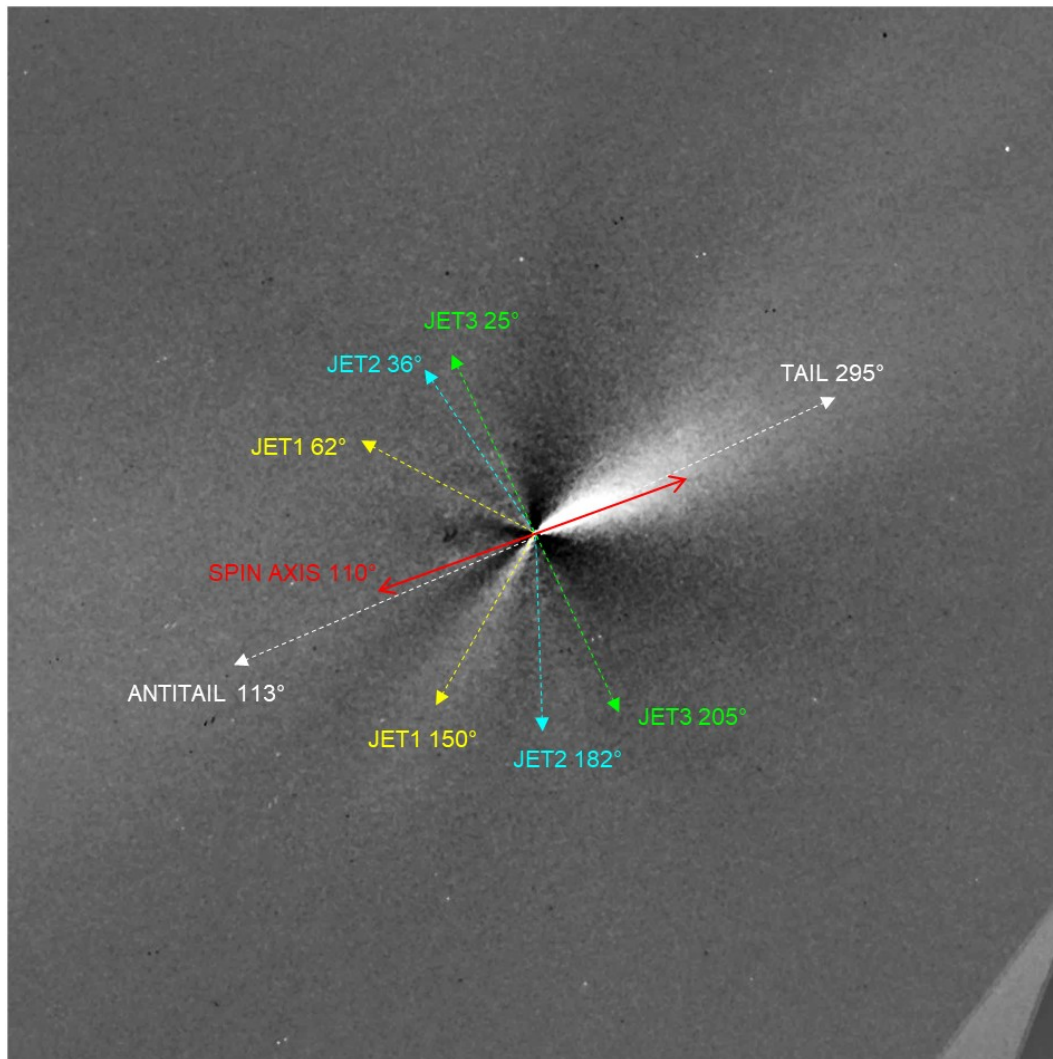


FIGURE 3

3I (ATLAS). The calculated direction of the jets is superimposed on the HST image of November 30, processed with a $1/r$ and a L-S filter ($\alpha=15^\circ$).